

Diagnosis of Demodex Folliculorum Eyelashes Infestation

Matthieu Randon*

Head of the Ophthalmology Department, CHM, Mayotte, France

***Corresponding Author:** Matthieu Randon, Head of the Ophthalmology Department, CHM, Mayotte, France.

Received: August 08, 2022

Published: August 11, 2022

© All rights are reserved by **Matthieu Randon.**

Demodex infestation of the eyelashes is a common disorder in ophthalmology. Slit lamp examination do not allow a very specific diagnosis. *In vivo* confocal microscope (HRT III) allows us to magnify the lashes and their follicles and to detect the demodex (cephalothorax with 8 legs followed by the abdomen) which measured around 300 microns of length.

In vivo confocal microscopy (IVCM) is an easy way to improve eyelid Demodex infestation. Eyelashes removal and microscopic inspection is no longer needed.

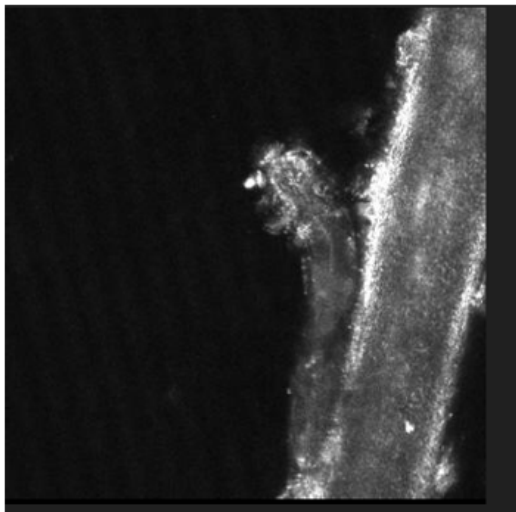


Figure 1: Demodex folliculorum attached to an eyelash.

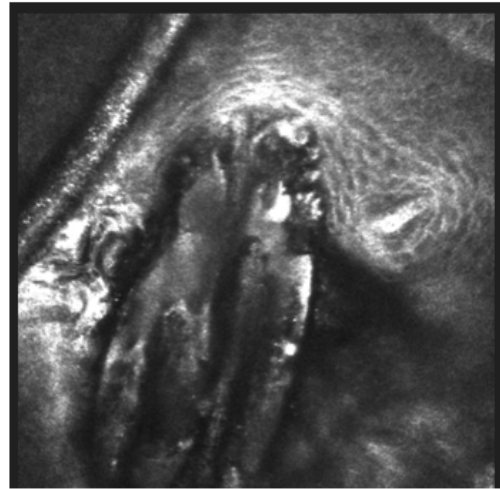


Figure 2: Three Demodex folliculorum in an eyelash follicle.