



Cells of "Red" and "White" Human Blood, Reflected by Thematic Badges and Philately

Bugaevsky KA*

*Department of Medical and Biological Foundations of Sports and Physical Rehabilitation,
The Petro Mohyla Black Sea State University, Nikolaev, Ukraine*

***Corresponding Author:** Bugaevsky KA, Assistant Professor, Department of Medical and Biological Foundations of Sports and Physical Rehabilitation, The Petro Mohyla Black Sea State University, Nikolaev, Ukraine.

Received: May 08, 2024

Published: June 03, 2024

© All rights are reserved by **Bugaevsky KA**.

Abstract

This research article presents the results of a study conducted by the author, the purpose of which was to determine the degree of representation, in such collecting means as phaleristics - on thematic, anatomical badges and, in philately - on postage stamps and envelopes, images of human blood cells, such as "red" and "white" blood.

Keywords: Human Blood Cells; "Red" Blood, "White" Blood; Erythrocytes; Platelets; Leukocytes; Thematic Badges; Philately; Postage Stamps and Envelopes; Screenshots

Introduction

The study of issues related to medicine and, in particular, to such basic medical science as human anatomy is always a relevant and in demand issue. Especially when such a scientific discipline as human anatomy, and such an important medical discipline as hematology, are represented in such a collecting medium as phaleristics, on thematic pins with images of human blood cells on them. When preparing this research article, its author, unfortunately, did not find any articles by phaleristics collectors on the issue under study. In this regard, the author has the courage to declare that he is a pioneer in studying the issue of reflecting human blood cells in phaleristics. In total, this article presents 144 thematic badges, and 8 philatelic materials (postage stamps and envelopes), depicting "red" and "white" human blood cells [1].

Aim of study

The purpose of this research article is to show the representation, in such collecting means as phaleristics, of thematic anatomical badges, and philately (postage stamps and postal envelopes, with images of "red" and "white" human blood cells on their front part (obverse).

Material and Methods

When writing this research article, its author used the method of literary critical analysis of the materials available to study. Also, the author found on the Internet, in thematic articles, on collection sites, the necessary thematic badges, postage stamps and covers

dedicated to the reflection on them of various human blood cells. The received phaleristic and philosophical materials were systematized, the found images of badges and stamps were converted into screenshot copies, described, with a strict indication of the places where they were borrowed on the Internet, to comply with copyrights.

Results and Discussion

As we know, from human anatomy and hematology (the study of human blood), conditionally, human blood can be divided into "red" - red blood cells and platelets, and "white" - different types of leukocytes (lymphocytes, neutrophils, basophils, eosinophils, monocytes and other cells) [4]. At the beginning of the article, I would like to present thematic badges depicting human bone marrow, with precursor cells, both red and white sprouts, then a selection of icons depicting erythrocytes and platelets on them, and then with images of various type, leukocytes [1,2]. Figure 1 shows 6 screenshots of thematic badges, with images on their front part/obverse of human bone marrow cells, incl. and erythroblasts [1,2].

The small collectible selection presented in figure 2 presents a joint image of different types of human blood cells - red blood cells, platelets and various types of leukocytes, a total of 19 thematic badges [1-3].

Further, in figure 3, in a large phaleristic selection, thematic anatomical badges are presented, with images on their front part

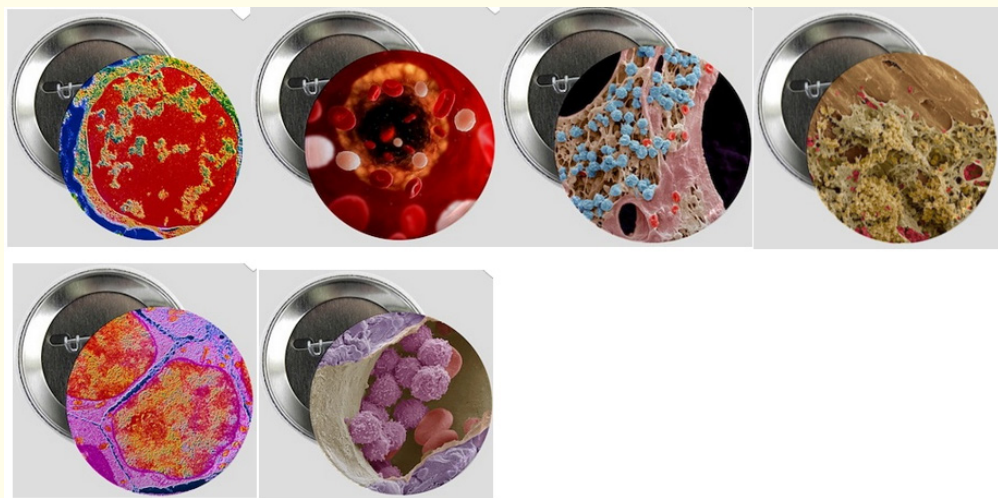
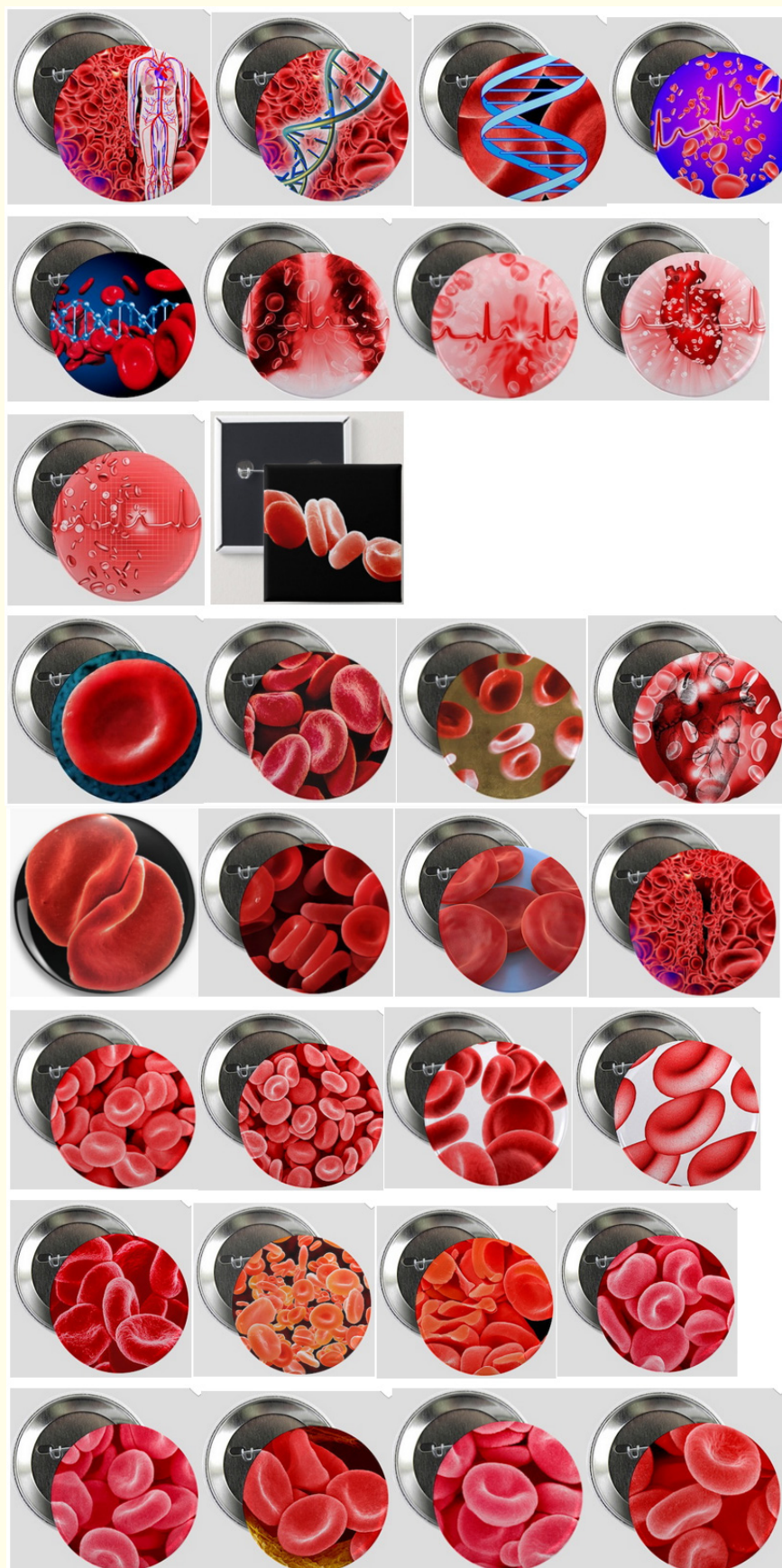


Figure 1: A selection of thematic badges depicting human bone marrow cells.



Figure 2: Different types of blood cells in thematic badges.



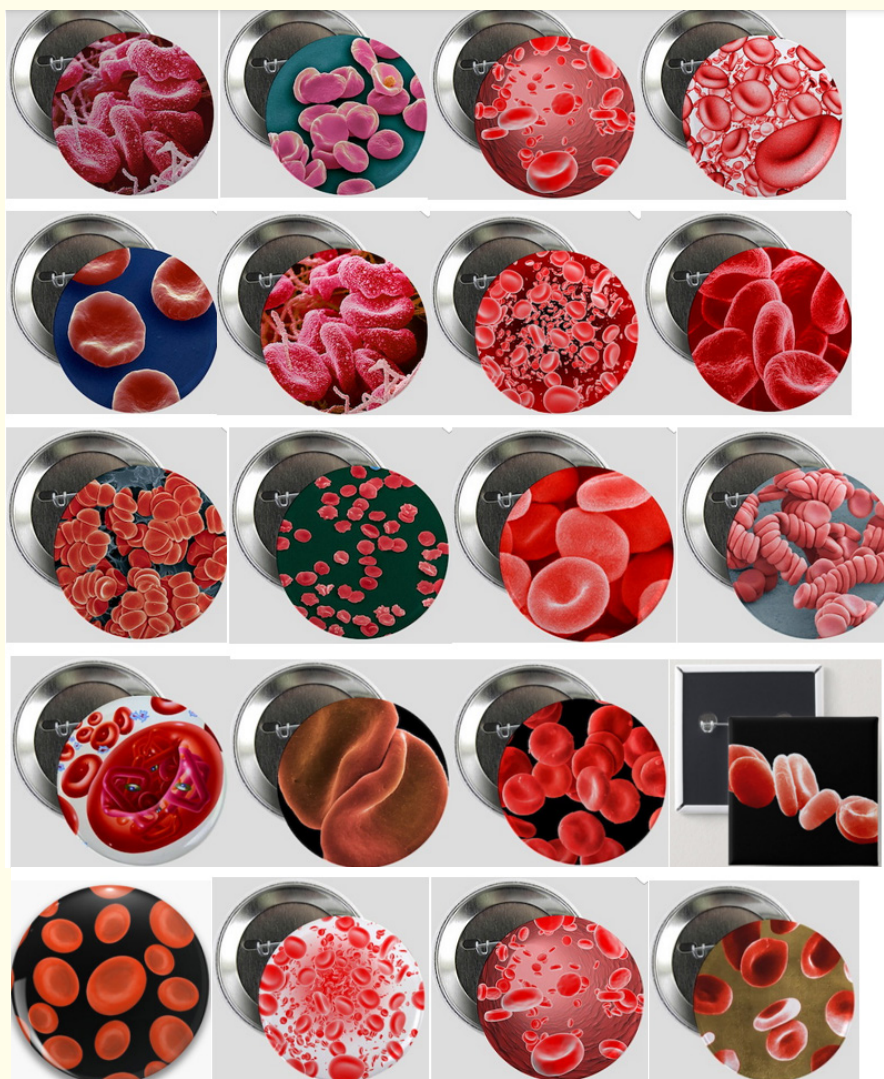


Figure 3: Human red blood cells on thematic badges.

of both erythrocytes and, on a number of icons, blood platelets - platelets. On a number of icons, red blood cells are depicted independently, one blood cell at a time, on some icons - in groups, several pieces each. There are copies of screenshots of badges where red blood cells are depicted inside blood vessels - arteries, arterioles and capillaries. In total, this thematic collection presents 50 anatomical badges [1,2].

In figure 3a, postage stamps and marked envelopes are presented from different countries of the world (Great Britain, the Forer Islands and the USA), with images on them of red blood cells (including those changed in sickle cell anemia and malaria), and other blood cells, person – 8 philatelic materials in total [5-8].

In figure 4, there are 2 thematic icons depicting blood cells and a hemoglobin molecule [1,2].

figure 5 shows a small selection depicting “red” blood cells in blood vessels of different sizes. In total, this collection contains 18 thematic badges [1,2].

Further, in figure 6, a selection of thematic badges is presented, depicting “white” blood cells of different types and types. In total, there are 42 thematic badges in this collection [1,2,9-11].

A small selection, consisting of 7 thematic badges, in figure 7, is dedicated to such medical science as hematology, which deals with the study of human blood and its components, as well as diseases of the blood and the human hematopoietic system [9-11].

This concludes another author’s research article, the purpose of which was to determine the extent to which the anatomy of human blood cells is reflected in the means of phaleristics. The author



Figure 3a: Postage stamps depicting human blood cells.

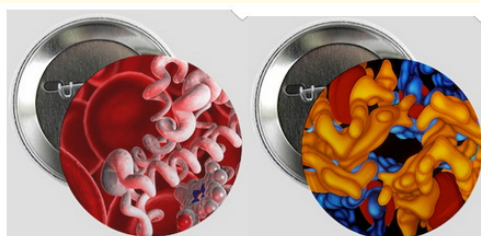


Figure 4: Human hemoglobin molecule on thematic badges.

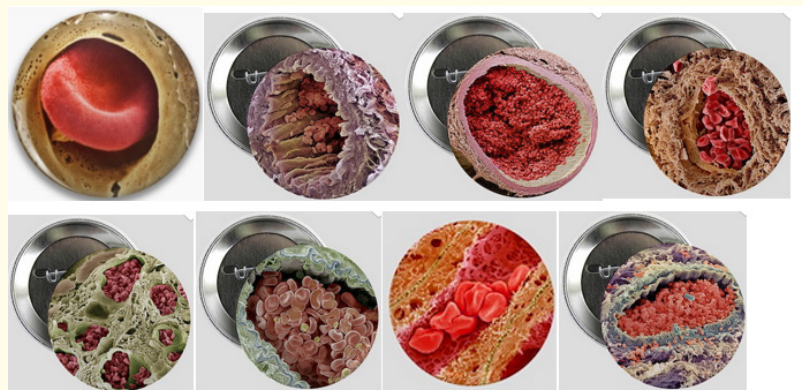




Figure 5: A selection of thematic badges depicting red blood cells inside different blood vessels in different organs of the human body.





Figure 6: A selection of thematic badges, with images on their obverse of various types of "white" human blood.



Figure 7: A selection of thematic badges dedicated to hematology.

is preparing new research articles to reflect human anatomy and physiology in various collecting media.

Conclusions

- The author of this research article, in a fairly complete, accessible and colorful manner, presented the results of his research, in accordance with the stated purpose.
- The use in the article of screenshots-copies, phaleristic and philatelic, collection materials, is quite appropriate, brightly and colorfully complements the text part of this article.
- The use of a wide variety of collection materials, as illustrative material, in research articles on anatomy and physiology, and various medical disciplines, expands our field of knowledge and can be actively used in the teaching and study of these disciplines.

Bibliography

1. Red Blood Cell Buttons.
2. Red Blood Cell Badges and Pins.
3. White Blood Cell Pins and Buttons for Sale.
4. Jeffrey Weitz MD. “Hematology: Basic Principles and Practice 7th Edition”. (2017).
5. STAMP US SCOTT 5802a.
6. Postage stamp. Great.
7. Microscopes (1989): Collect.
8. Poland 1962 Sc 1087-9 WHO Malaria Eradication Mosquito Blood Cells Stamp CTO | Europe.
9. Hematology Badges and Pins.

10. Badge for Sale with the work. “Funny hematology with white blood cells de l’artiste”.
11. Hematología Células explosivas Laboratorio Retráctil insignia carrete cordón.